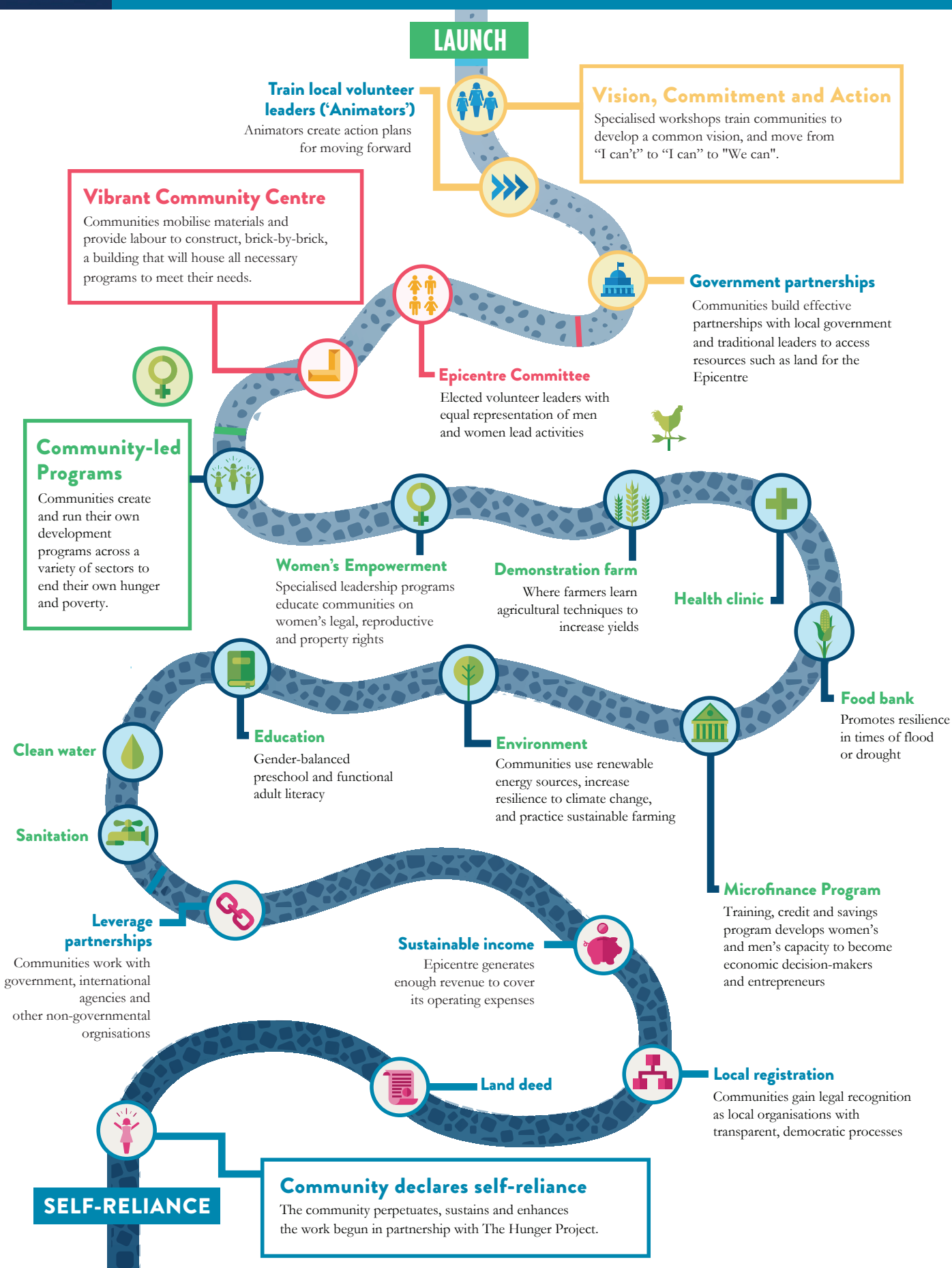


# EPICENTRE STRATEGY

Our holistic, gender-focused strategy takes rural villages on a path to sustainable self-reliance.



"The Hunger Project program brought great unity and solidarity among the partner communities, resulting in shared responsibilities for development."

– Focus Group Participant (2012), Odumase-Wawase Epicentre, Ghana

REACHING **1.7 MILLION PEOPLE IN**  
**8 COUNTRIES ACROSS AFRICA**